

B!family Fabrics



.01 orange



.02 kiwi



.03 grey



.05 blue



.07 red



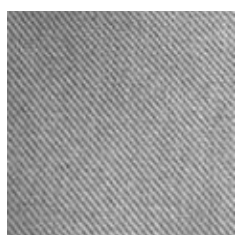
.08 lime



.09 lilac



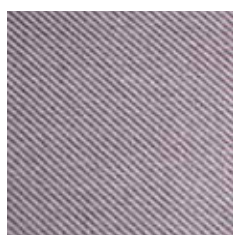
.10 light blue



.51 light grey flecked



.52 aquamarin flecked



.53 flamingo pink flecked

Fabric made of 100% Polyester
with PVC-Coating

60.000 Martindale cycles - abrasion resistance
370 g/m²

Water repellent and washable at 40° with detergent without bleach
Hang up dripping wet after washing.
Not suitable for the dryer, do not iron or wring.
No dry cleaning.



Fabric made of 100% dirt-repellent polyester
with teflon-coating

100.000 Martindale cycles - abrasion resistance
320 g/m²

Protection against dirt and moisture by equipping with Repellan®.
Washable at 40° with detergent without bleach,
not suitable for the dryer, do not iron or wring.
Dry cleaning possible.

Commercially available colour deviations and changes in the technical specifications reserved.

In case of complaints we reserve the right to have the reference to its previous care and cleaning checked by a specialist institute.

SMV Sitz- & Objektmöbel GmbH
Gewerbestraße 18
D-32584 Löhne
Geschäftsführer: Inge Brünger-Mylius, Björn Mylius
Fon +49 (5731) 300 17-0
info@smv-gmbh.de